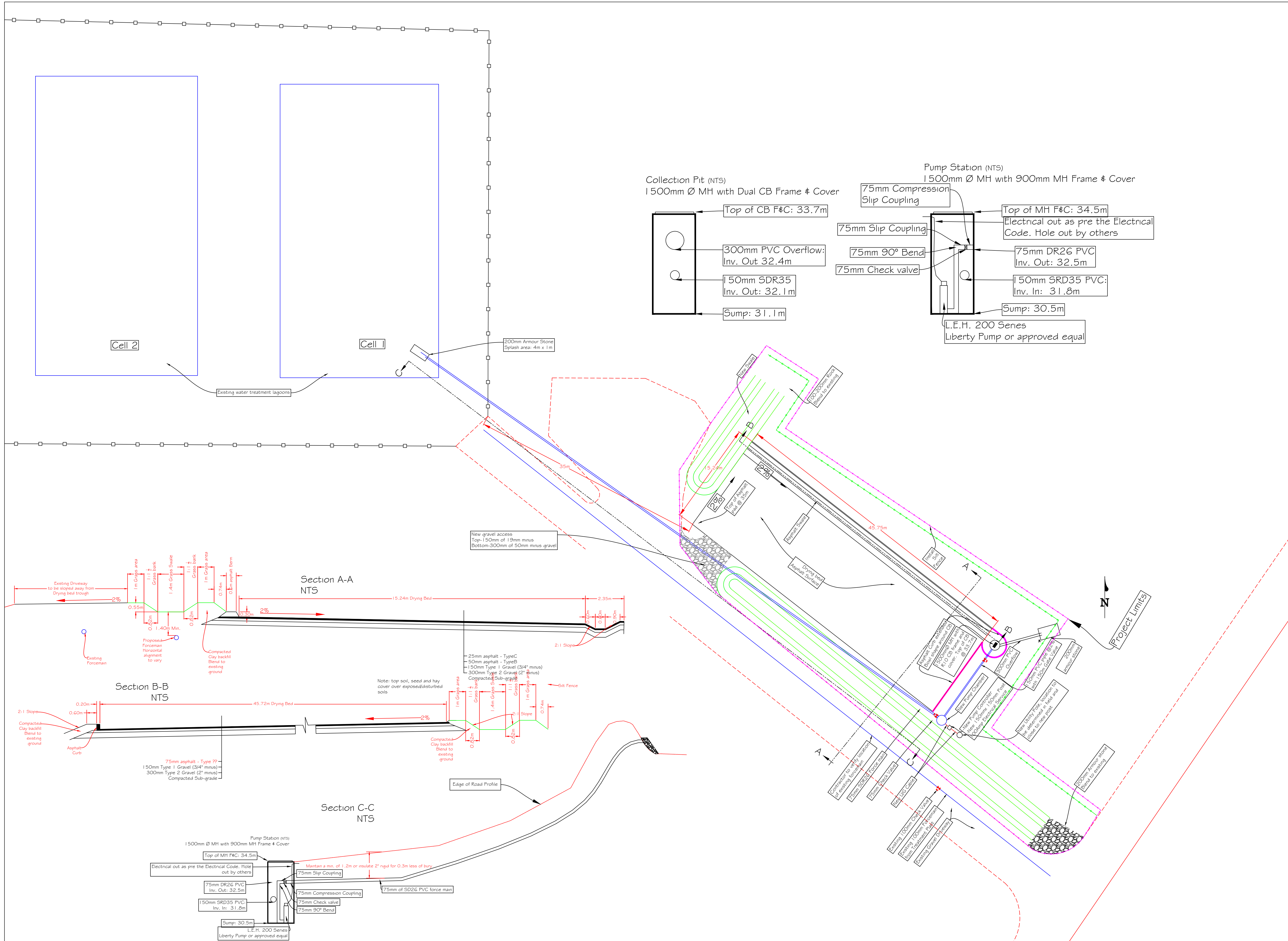


- 1) All work must follow Nova Scotia Environment Erosion and Sedimentation control guidelines
- 2) All work to follow Nova Scotia Municipal services standard Specifications
- 3) All grubbing's to be buried on site to free of trees and brush and wooden materials
- 4) Imported fill must be approved and free of contaminants
- 5) Granular materials to meet NSTIR specifications for Type 1 and Type 2 materials
- 6) The Town of Shelburne will provide on-site inspection and approve layout, sub-grade and final base compaction levels, asphalt as well commissioning of pumping system.
- 7) Imported berm materials must be in place before final granular and asphalt placement. Seed and straw cover for berm areas must be installed immediately following placement
- 8) Shop drawings must be submitted for approval for the manhole, pump chamber and effluent pump
- 9) A Robert Funke Engineering to be contacted if site conditions differ from dwg's.
- 10) All above and below ground electrical to conform to National electrical code and NFPA specifications.




NO.	REVISIONS	DATE	APP.

A.R. Funke Engineering

Project: Town of Shelburne
Water Treatment Plant Drying Bed

Scale: 1:250 Date: Jan. 18, 2023
 Drawn By: A.M.L. Designed By: A.R.F.
 Approved By: _____ Sheet #: _____


1/1