



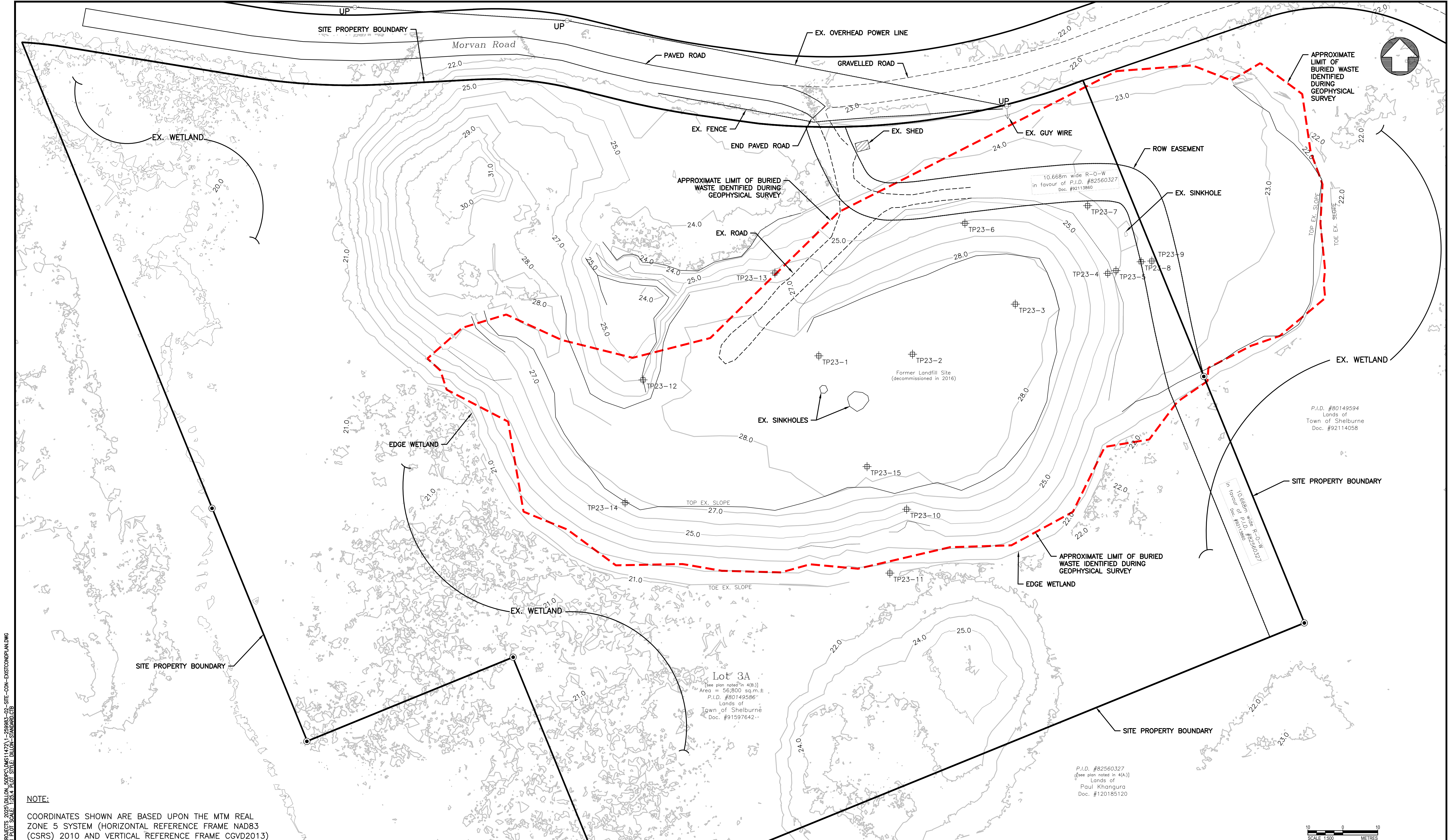
**SITE PLAN**  
SCALE: 1:50000

## LIST OF DRAWINGS

- 1 EXISTING CONDITIONS PLAN
- 2 PROPOSED CAP
- 3 SECTIONS 1 TO 5 AND DETAILS

# SHELBURNE LANDFILL CLOSURE PROJECT No. 25-9983 TENDER MAY 2025





**NOTE:**  
 COORDINATES SHOWN ARE BASED UPON THE MTM REAL ZONE 5 SYSTEM (HORIZONTAL REFERENCE FRAME NAD83 (CSRS) 2010 AND VERTICAL REFERENCE FRAME CGVD2013)

FILENAME: C:\P\WORKING DIRECTORIES\PROJECTS\2025\DILLON\_500PC\DM51472\1-259983-02-SITE-COM-EXISTCONDPLAN.DWG  
 PLOT DATE: 2025-05-28 10:28:45 AM PLOT SCALE: 1:500 PLOT STYLE: DILLON\_STANDARD.ctb

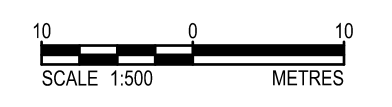
**Conditions of Use**  
 Verify elevations and/or dimensions on drawing prior to use. Report any discrepancies to Dillon Consulting Limited.  
 Do not scale dimensions from drawing.  
 Do not modify drawing, re-use it, or use it for purposes other than those intended at the time of its preparation without prior written permission from Dillon Consulting Limited.



NO.	ISSUED FOR	DATE	BY
2	TENDER	2025/05/29	CS
1	REVIEW	2025/05/23	CS

DESIGN	REVIEWED BY
D.C.	C.S.
DRAWN	CHECKED BY
N.B.	D.C.
DATE	MAY 2025
SCALE	1:500

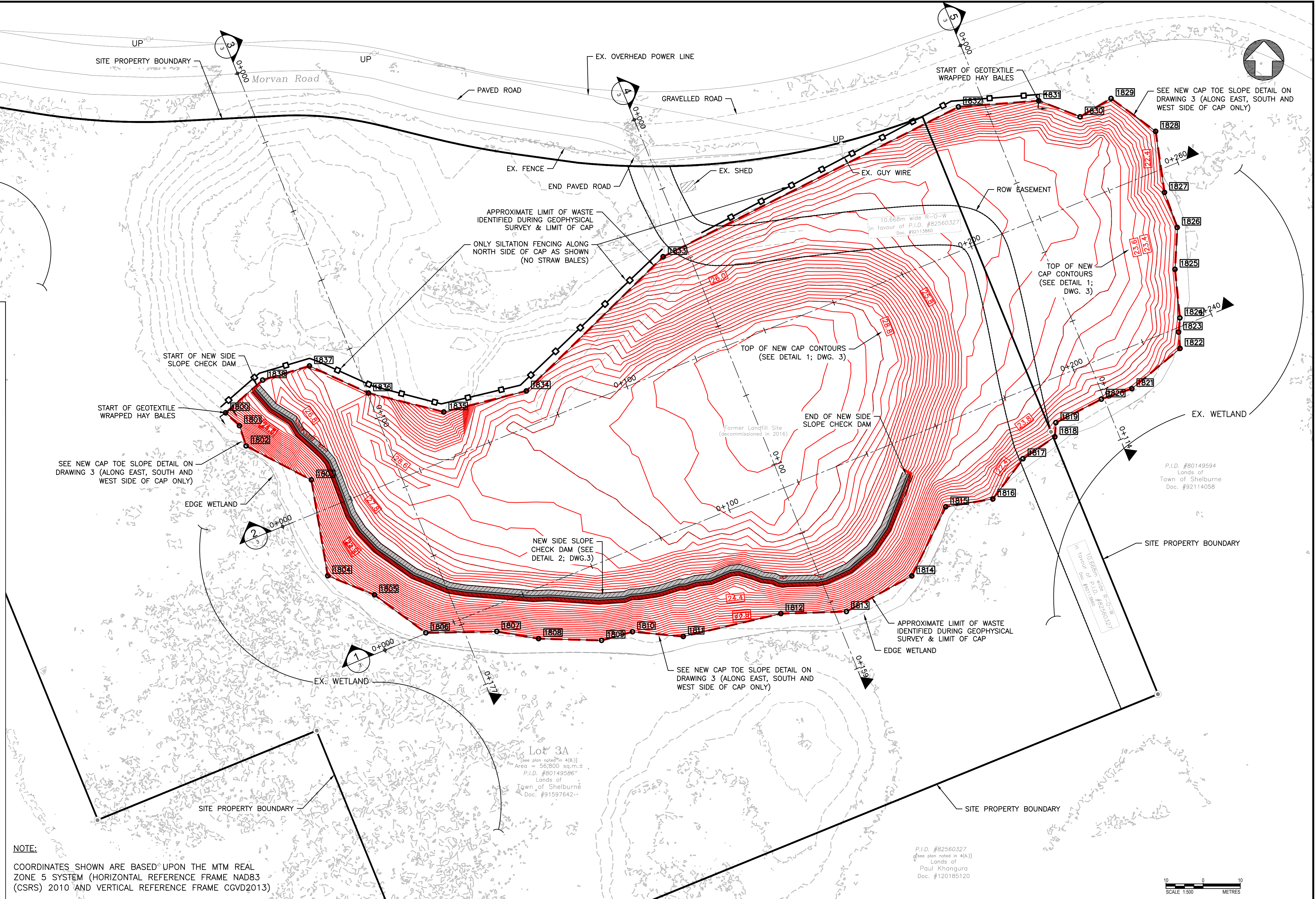
<b>SHELburne LANDFILL CLOSURE</b>		PROJECT NO. 25-9983
<b>EXISTING CONDITIONS PLAN</b>		SHEET NO. <b>1</b>



FILENAME: C:\P\WORKING DIRECTORIES\PROJECTS\2025\WILSON\_500PCA\DWG\1472V-259983-02-SITE-CON-PROPOSEDCAP.DWG  
 PLOT DATE: 2025-05-28 @ 2:41:43 PM PLOT SCALE: 1:500 PLOT STYLE: DILLON\_STANDARD.ctb

APPROXIMATE EXTENT OF CAPPING		
No.	NORTHING (m)	EASTING (m)
1800	4846629.04	25435051.09
1801	4846625.59	25435054.81
1802	4846620.15	25435056.59
1803	4846610.98	25435074.18
1804	4846585.23	25435078.58
1805	4846580.10	25435091.14
1806	4846569.87	25435104.98
1807	4846570.24	25435124.05
1808	4846568.30	25435135.29
1809	4846567.84	25435152.24
1810	4846570.17	25435160.55
1811	4846568.90	25435174.22
1812	4846575.04	25435200.50
1813	4846575.59	25435218.11
1814	4846585.16	25435235.71
1815	4846603.76	25435244.84
1816	4846605.86	25435257.52
1817	4846616.68	25435265.61
1818	4846622.57	25435274.21
1819	4846626.38	25435274.47
1820	4846632.70	25435286.71
1821	4846635.53	25435294.92
1822	4846646.34	25435307.88
1823	4846650.75	25435307.48
1824	4846654.56	25435307.85
1825	4846667.61	25435306.52
1826	4846678.88	25435307.12
1827	4846688.29	25435303.70
1828	4846704.72	25435301.32
1829	4846713.56	25435289.31
1830	4846708.63	25435280.99
1831	4846712.94	25435269.87
1832	4846711.29	25435248.26
1833	4846671.01	25435168.82
1834	4846634.91	25435131.99
1835	4846629.25	25435109.79
1836	4846634.34	25435089.52
1837	4846641.63	25435073.64
1838	4846637.84	25435061.05

**NOTE:**  
 COORDINATES SHOWN ARE BASED UPON THE MTM REAL ZONE 5 SYSTEM (HORIZONTAL REFERENCE FRAME NAD83 (CSRS) 2010 AND VERTICAL REFERENCE FRAME CGVD2013)

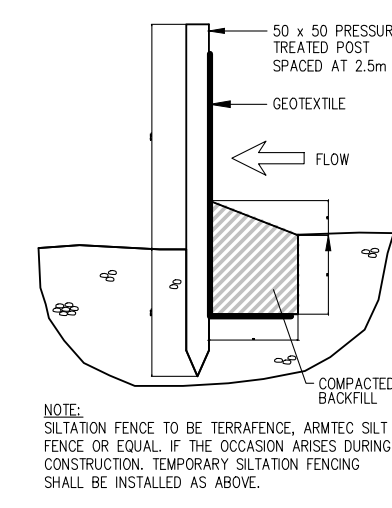
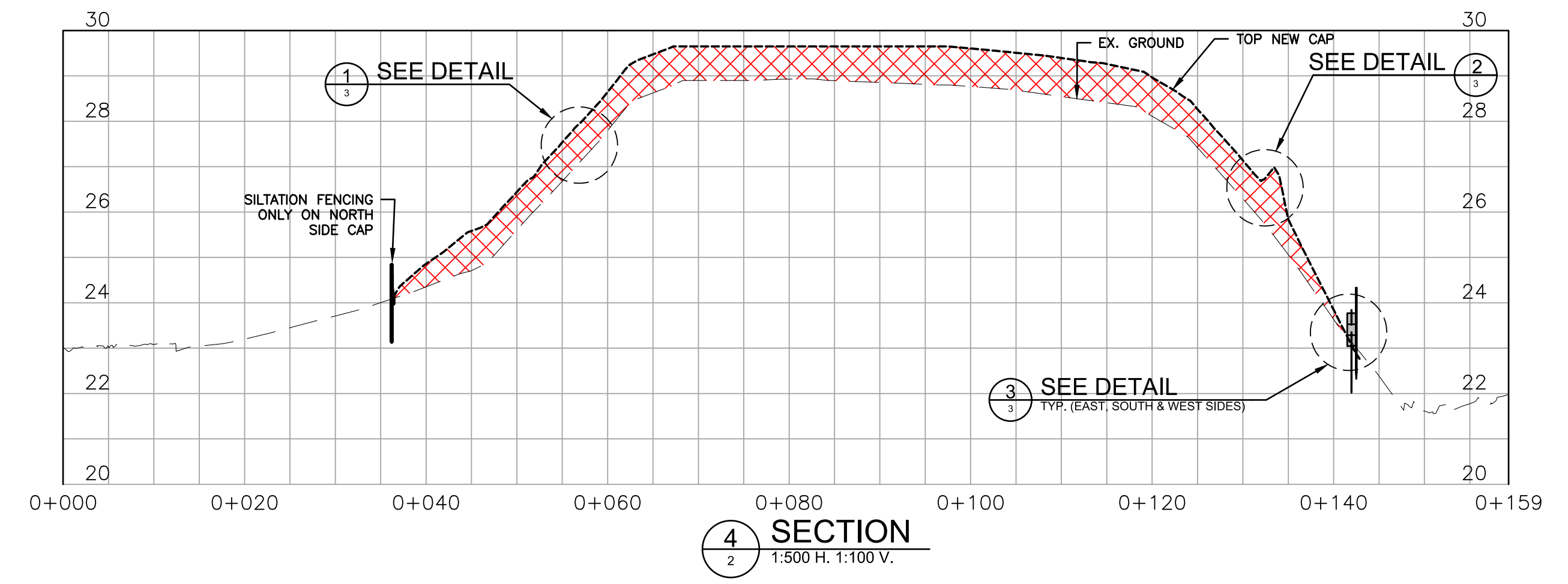
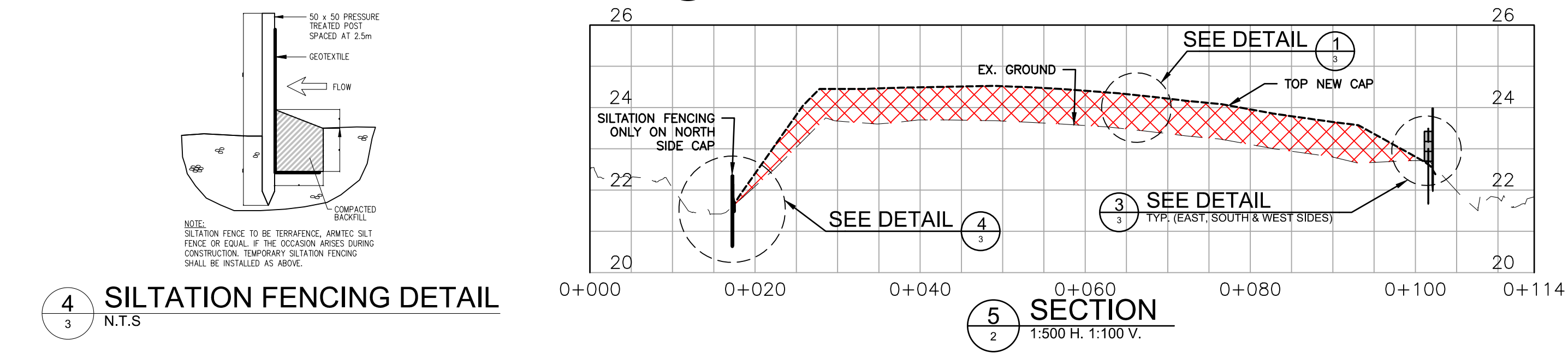
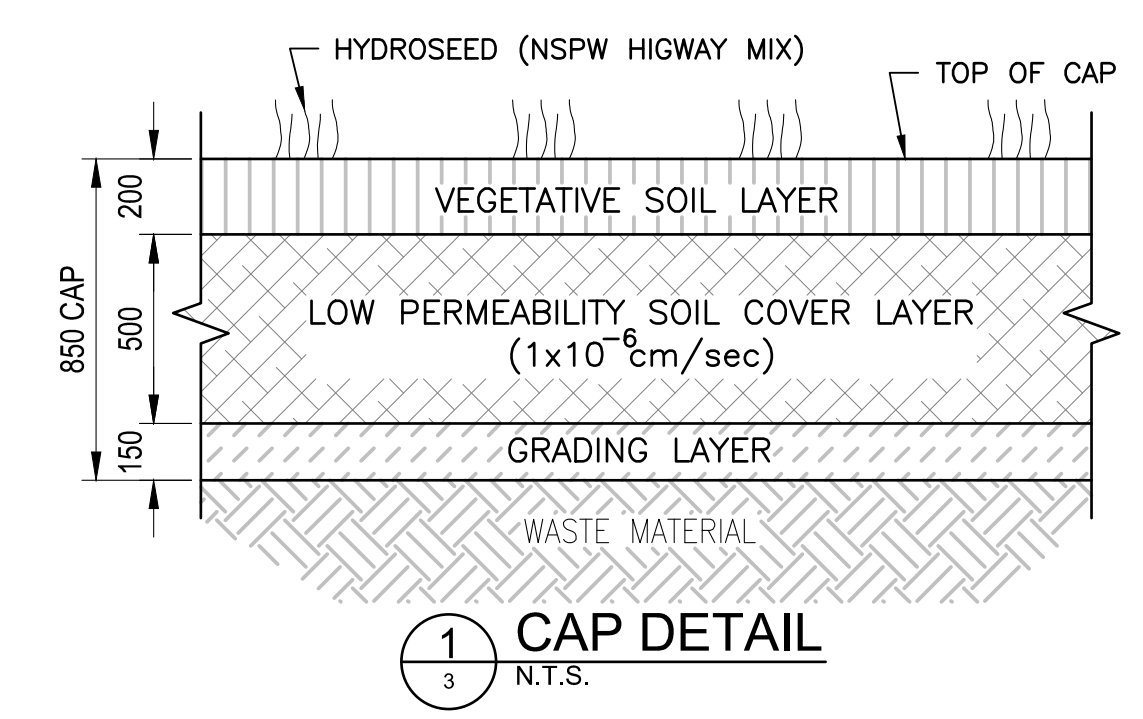
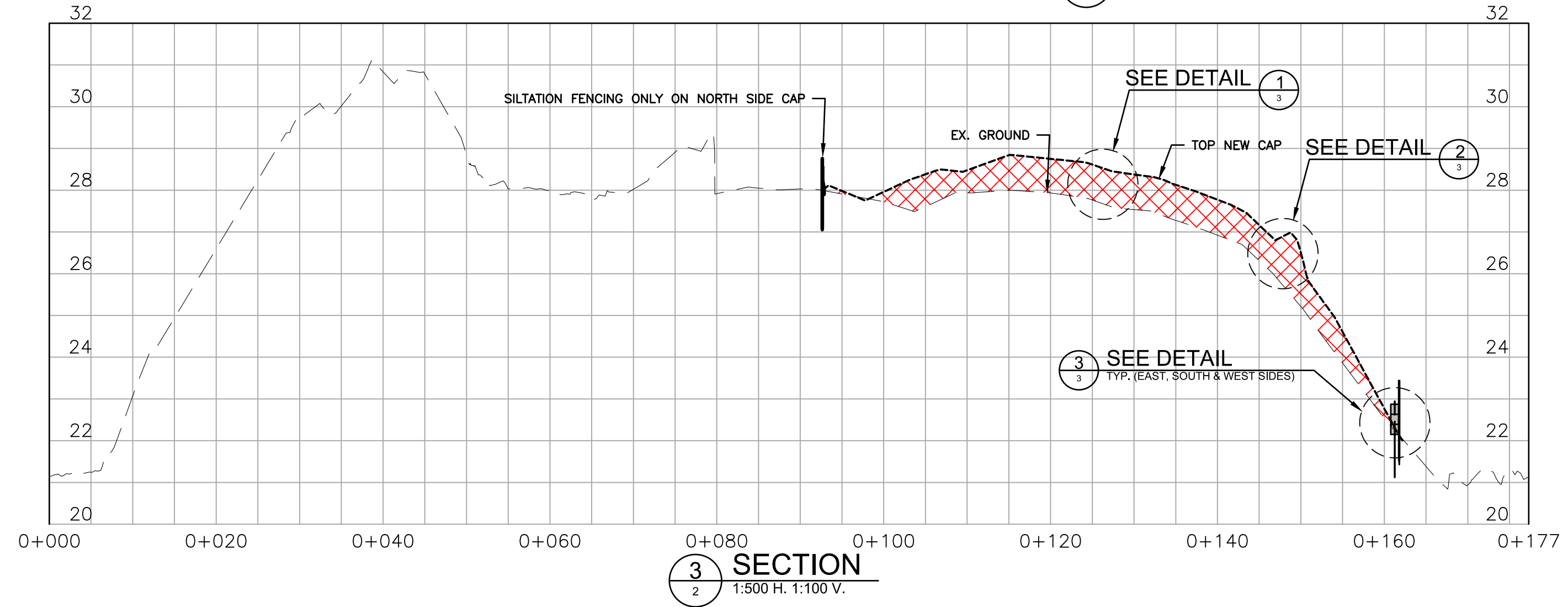
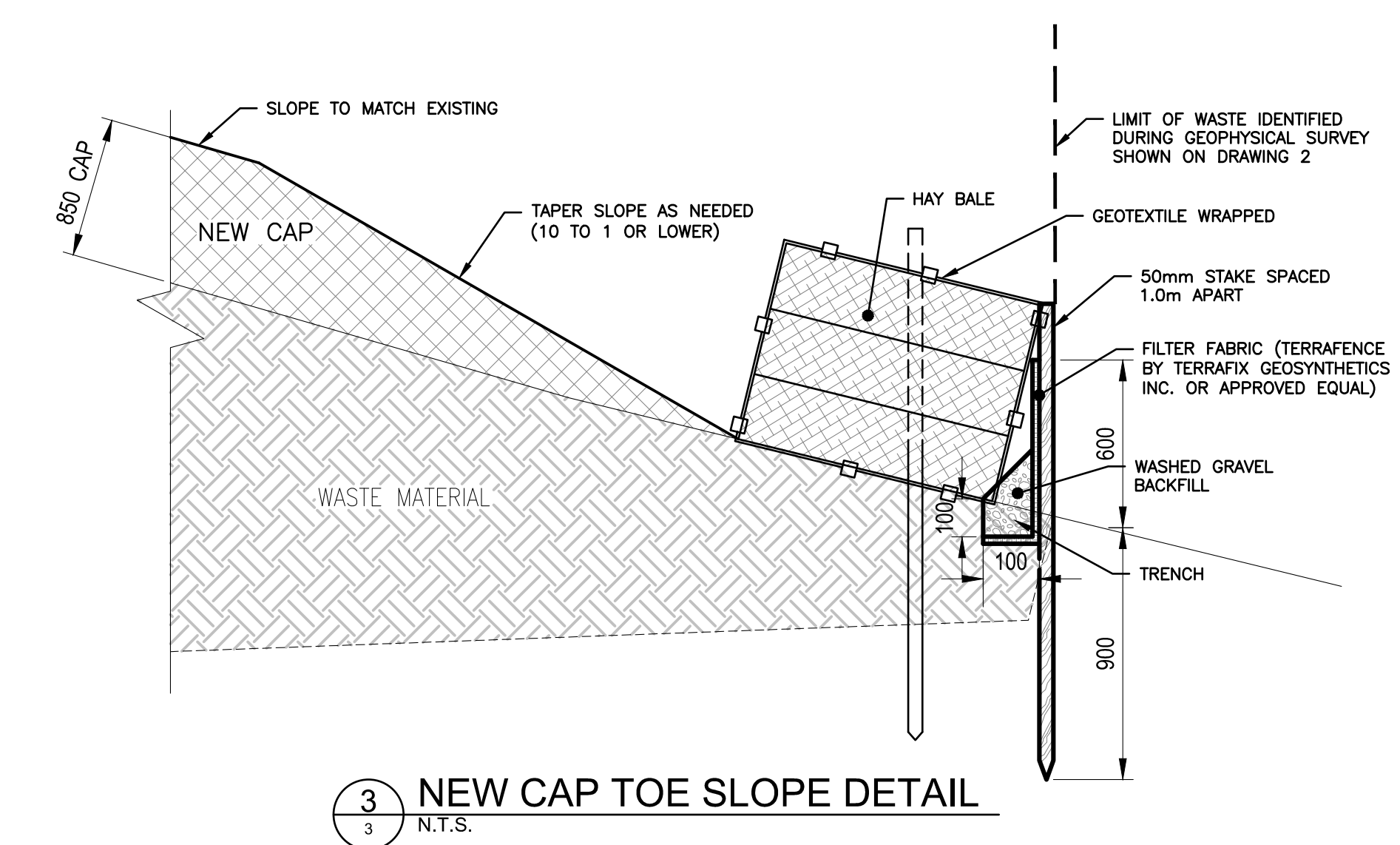
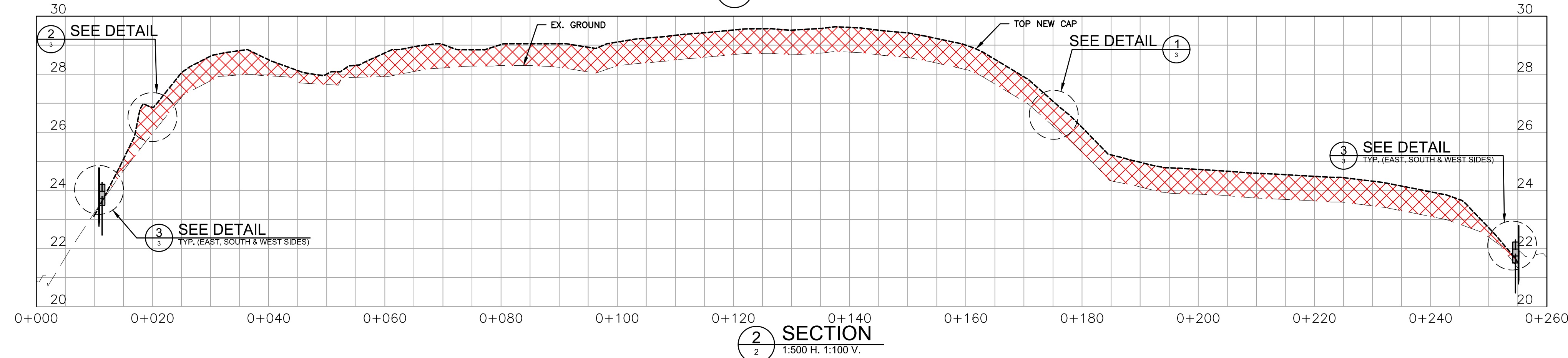
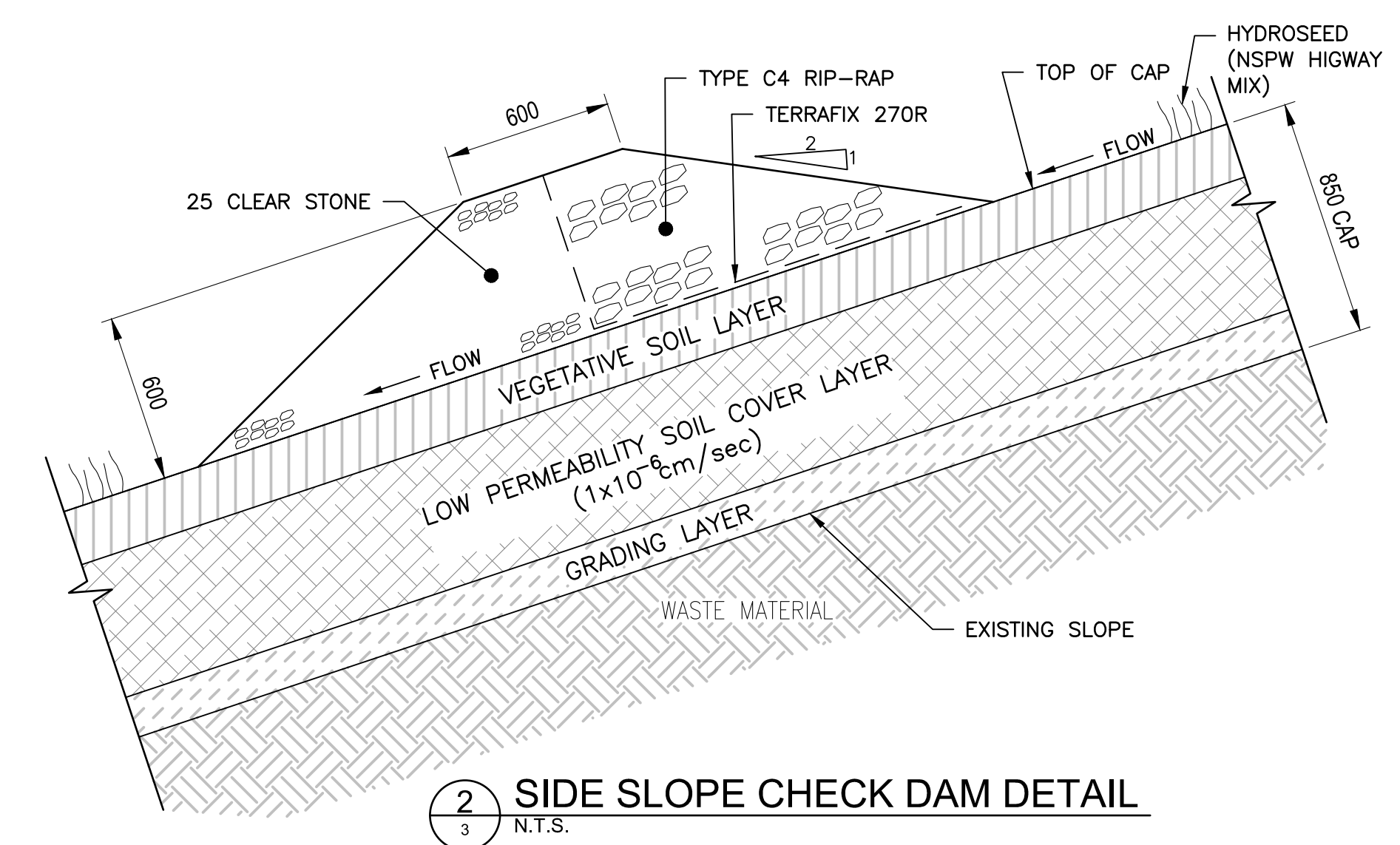
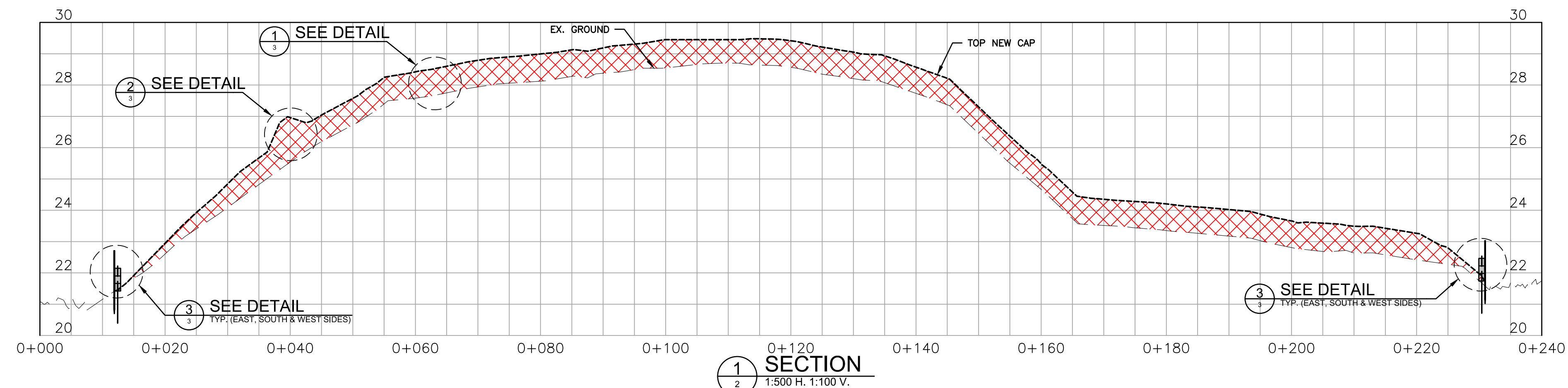


**Conditions of Use**  
 Verify elevations and/or dimensions on drawing prior to use. Report any discrepancies to Dillon Consulting Limited.  
 Do not scale dimensions from drawing.  
 Do not modify drawing, re-use it, or use it for purposes other than those intended at the time of its preparation without prior written permission from Dillon Consulting Limited.



No.	ISSUED FOR	DATE	BY
2	TENDER	2025/05/29	CS
1	REVIEW	2025/05/23	CS

DESIGN	D.C.	REVIEWED BY	C.S.	<b>SHELburne LANDFILL CLOSURE</b>  <b>PROPOSED CAP</b>	PROJECT NO.	25-9983
DRAWN	N.B.	CHECKED BY	D.C.		SHEET NO.	2
DATE	MAY 2025		SCALE	1:500		



FILENAME: C:\P\WORKING DIRECTORIES\PROJECTS\2025\WILSON\_500PCS\DWG\14723-259983-02-SITE-COM-SECTIONS.DWG  
 PLOT DATE: 2025-05-28 10:24:23 AM PLOT SCALE: 1:25.4 PLOT STYLE: DILLON-STANDARD.CTB

**Conditions of Use**

Verify elevations and/or dimensions on drawing prior to use. Report any discrepancies to Dillon Consulting Limited.

Do not scale dimensions from drawing.

Do not modify drawing, re-use it, or use it for purposes other than those intended at the time of its preparation without prior written permission from Dillon Consulting Limited.



DESIGN	D.C.	REVIEWED BY	C.S.
DRAWN	N.B.	CHECKED BY	D.C.
DATE	MAY 2025		
SCALE	AS SHOWN		
NO.	ISSUED FOR	DATE	BY
2	TENDER	2025/05/29	CS
1	REVIEW	2025/05/23	CS

<b>SHELBURNE LANDFILL CLOSURE</b>		PROJECT NO.	25-9983
<b>SECTIONS 1 TO 5 AND DETAILS</b>		SHEET NO.	<b>3</b>