



WELCOME TO OUR NEW CAO, DARREN SHUPE!

# Town of Shelburne

## FALL / WINTER 2018



### IN THIS ISSUE

## Message From the Mayor

Karen Mattatall

We are pleased to welcome our new CAO, Darren Shupe. Darren previously worked as the planner for the Town and will continue to work with council and staff on may planned projects. Along with Darren, our staff work diligently on budgets, policies, planning, projects, programming, and funding.

The Town had a very exciting summer season: The Guild Hall Summer Music Series hosted 15 shows, the Farmer's Market was in full swing, the cruise ship visit saw over 700 people disembark upon the Town, exciting sailing events, Founder's Days Celebrations, and many more. We heard rave reviews about the town and how welcome our residents made visitors feel.

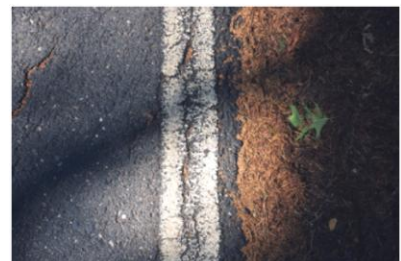
This Fall, Water St. and Fall's Lane will be resurfaced. The process is called NSTIR Seal Coat Type A. it will protect the road underneath but does not totally smooth out the road. It fills in cracks and extends the life of the asphalt underneath. In TIR's 2018-19 road report, they estimate repaving to cost \$300,000/km. Seal Coating costs approximately \$100,000/km. Public works will be working on storm drains and painting lines which will also have a cost savings for the Town. The new Asset Management Committee will be taking stock of the number and condition of Town assets during the next 2 years. Public Meetings will also play a role in providing input regarding assets.

Check our Facebook or Visit our website for Town information and updates <https://www.town.shelburne.ns.ca/>



What's Happening Page 2

*"If everyone is moving forward together, then success takes care of itself."*  
-Henry Ford



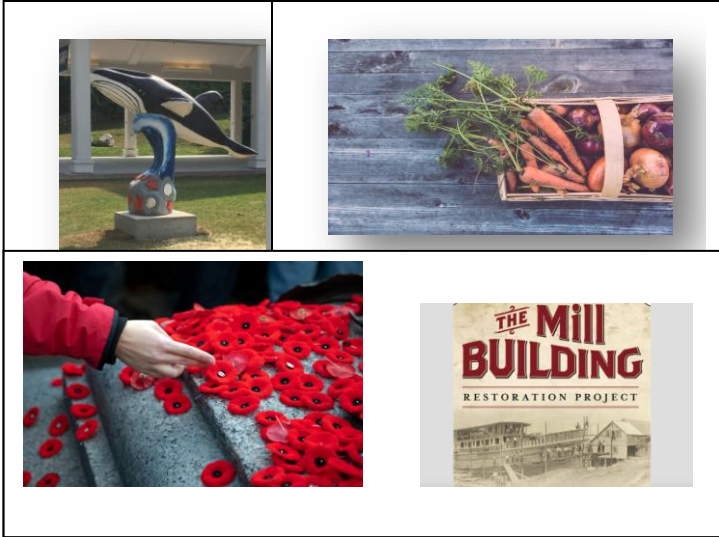
### Department News

Feature Department – Operations Department

**Asset Management Fact:** The Town of Shelburne has 43kms of Transportation Assets, including roads and sidewalks.

## What's Happening

Shelburne has a lot of interesting projects in the works including the Mill Building Project, Public Art, Community Gardens and more!



- 🚩 Giant Pumpkin Festival – Oct. 6
- 🚩 Fall Town Wide Yard Sale – Oct. 6
- 🚩 Secret Park Opening – Oct. 13
- 🚩 Halloween House Decorating Contest
- 🚩 Video Contest Deadline – Oct. 31
- 🚩 Remembrance Day Ceremony – Nov. 11 (Venue Change: Shelburne Regional High School)
- 🚩 Shelburne Celebrates Christmas – Nov. 23-25 (Venue: TBA)
- 🚩 Christmas House Decorating Contest
- 🚩 New Year's Levee- Jan. 1



## Asset Management Committee

Asset Management is a way of paying attention to what we own as a Town, such as buildings, pipes, streets, treatment plants, equipment, etc. We need to actively manage them in a way that ensures they will continue to contribute to the quality of life for our citizens now and in the future. The Town of Shelburne is taking part in a provincial pilot program on Asset Management which will result in: an inventory and condition assessment of current assets, projected lifespan of assets, costs for replacing and maintaining assets, the level of service that each asset provides, and an Asset Management Plan. This approach leads to adequate investment in the full life cycle costs of these items. Proper data and information is important to guide Council's budget process, adjust service levels as needed, plan for preventative maintenance, and create a prioritized replacement plan.

The Asset Management Committee was formed to help work on this large project and is made up of Councillors, Town Staff, and public members.

## Operations Department

The Operations Department is made up of three main divisions; Public Works, Water, and Wastewater Treatment Services.



The Department's 6 full-time and 2 seasonal staff members help deliver the essential services required to maintain the Town's water system, wastewater system, street / sidewalk maintenance and repairs, storm water management, snow / ice control, maintenance of parks & cemetery, and the upkeep of other Town assets & properties.

### Key Capital Projects

- Seal Coating Fall's Lane / Water St
- Wastewater Treatment Facility Upgrade
- Sidewalk Improvements
- Cemetery Improvements
- Stormwater System Upgrades
- Culvert Rehabilitation
- Marine Terminal Rehabilitation

### Did You Know?

You can place a work order directly through the Town's website at:

<https://www.town.shelburne.ns.ca/create-a-work-order.html>

## Highlights

### GEOGRAPHIC INFORMATION SYSTEMS (GIS)

The value of good data to assist in decision-making is critical for the complex business of operating a town.

GIS is a framework that organizes layers of different kinds of information and plots data on a map.

The Town of Shelburne is employing GIS Technician, Andrew Jones, to aid in the development of our asset management plan. These maps will help us better understand the location and condition of assets (roads, water/sewer lines) and establish priorities for repairs.





### Town Contact Information:

168 Water Street  
PO Box 670  
Shelburne, NS  
BoT 1Wo  
(902) 875-2991

Office Hours 8:30am-4:00pm  
(Monday to Friday)

## HALLOWEEN DECORATING CONTEST



Nominate your neighbours  
[clerk@town.shelburne.ns.ca](mailto:clerk@town.shelburne.ns.ca)

## 2018 WASTE COLLECTION INFORMATION

Please keep in mind:  
All items are to be placed curbside by 7:00 a.m. on collection day to ensure collection can take place.

For more information check our website at [www.municipalityofshelburne.ca](http://www.municipalityofshelburne.ca).  
The Waste Diversion Coordinator can be reached at (902) 875-3544 ext. 240, or by calling the Waste Hotline at 902-875-5336. Check us out on Facebook at Waste Diversion Coordinator.

GREEN WEEK	DAILY SCHEDULE	RED WEEK	DAILY SCHEDULE
MONDAY	Clyde River, Clinton Road, Beaverdam, Quirns Falls, Ingoma, Round Bay, Albion, Roseway, Gunning Cove, Carleton Village, Churchover and Backtown	TUESDAY	Jordan Falls, Lake John Road, East Jordan, West Green Harbour, East Green Harbour, Alesnide, Osborne, Pleasant Point and Canada Hill
TUESDAY	Ohio, Welshtown, Woodbawn Drive and North Loop Road	WEDNESDAY	Town of Lockport, Brighton and West Head
WEDNESDAY	Sandy Point, Roseway Park, Jordan Bay, Jordan Ferry, Lake Road and Jordan Branch	THURSDAY	Roe Island, Little Harbour, Sable River, West Middle Sable, East Sable, Jones Harbour, MacLeans Lake Road and Little Port (L'Herbert)
THURSDAY	Town of Shelburne (South Side of King Street)	FRIDAY	
FRIDAY	Town of Shelburne (North Side of King Street)		

JANUARY							FEBRUARY							MARCH							APRIL							MAY							JUNE													
S	M	T	W	T	F	S	S	M	T	W	T	F	S	S	M	T	W	T	F	S	S	M	T	W	T	F	S	S	M	T	W	T	F	S	S	M	T	W	T	F	S	S	M	T	W	T	F	S
1	2	3	4	5	6		1	2	3	4	5	6	1	2	3	4	5	6	7	1	2	3	4	5	6	7	1	2	3	4	5	6	7	1	2	3	4	5	6	7	1	2	3	4	5	6	7	
8	9	10	11	12	13	14	8	9	10	11	12	13	8	9	10	11	12	13	14	8	9	10	11	12	13	14	8	9	10	11	12	13	14	8	9	10	11	12	13	14	8	9	10	11	12	13	14	
15	16	17	18	19	20	21	15	16	17	18	19	20	15	16	17	18	19	20	21	15	16	17	18	19	20	21	15	16	17	18	19	20	21	15	16	17	18	19	20	21	15	16	17	18	19	20	21	
22	23	24	25	26	27	28	22	23	24	25	26	27	22	23	24	25	26	27	28	22	23	24	25	26	27	28	22	23	24	25	26	27	28	22	23	24	25	26	27	28	22	23	24	25	26	27	28	
29	30	31					29	30	31				29	30	31					29	30	31					29	30	31					29	30	31					29	30	31					

**CHRISTMAS TREE COLLECTION**  
On YO UR specific collection day between the dates of January 15 - 25, 2018

**SPRING METAL COLLECTION**  
On YO UR specific collection day between the dates of April 17 - 27, 2018

**FALL METAL COLLECTION**  
On YO UR specific collection day between the dates of October 16 - 26, 2018

**THE REGIONAL MATERIALS RECOVERY FACILITY (C&D Site)**  
4571 Hwy 3, West Green Harbour.  
Open from Tuesday  
Saturday from 9:30 a.m. - 4:00 p.m.

Items NOT accepted during regular waste collection are listed below:

Acceptable Items Include:  
Scrap metal, white appliances, barbecues, freezers, emptied oil barrels, baseboard heaters, refrigerators, air conditioners, lawn mowers, bicycles, microwaves, and any other type of metal.

**TIP:**  
Why wait for one of the metal collections when you can drop it off anytime throughout the year for free. Did you know that metal items can be taken to the Regional Materials Recovery Facility located at 4571 Hwy 3, West Green Harbour free-of-charge at any time during the year?

Tipping Fee is \$60.00 per tonne for construction & demolition materials.  
All materials must be separated into the following streams:  
1) Wood items  
2) Roofing shingles  
3) Gypsum board/drywall, plaster  
4) Vinyl/Plastic building materials, carpeting, built up roofing, ceiling tiles, vinyl floor/linoleum, wiring, lighting fixtures and insulation.  
Insulation: Please have fibreglass insulation in bags so it will not blow around. Sheets of Styrofoam insulation can be taken whole, but must be bagged if in smaller pieces.

Items FREE to dispose of include:  
● Scrap Metal ● Metal Appliances  
● Wire Lobster Traps  
● Lobster Rope ● Leaf and Yard Waste

You can return up to four used car tires (less than one tonne) to any tire retailer in NS. Tires must be off the rim and free of mud and debris.

All construction waste, as well as any solid wooden items, must be taken to the Regional Materials Recovery Facility in West Green Harbour to be recycled.

Propane tanks, rusted paint cans, and other household hazardous waste items are to be taken to the Hazardous Waste Depot at 245 Sandy Point Road, on the 1st and 3rd Monday of each month for proper disposal from 9am - 1pm & 2pm - 4pm. (No motor oil, pesticides, etc.)

Electronics must be taken to the EPR (Electronic Products Recycling Association) Depot at 100 King Street (across from the Shelburne Mall) to be recycled. No cost to drop off tires.



**WILDFIRE SAFETY**  
-remove dead vegetation  
-check fire bans and get burn permits  
-Don't leave fires unattended  
**Fire Dept Contact**  
(902) 875-3106



**HUNTING SAFETY**  
-obtain proper permits / licenses  
-Be seen by other hunters  
-Be certain of your target and what is behind it  
-Treat every firearm as if it is loaded  
-no hunting within town limits



**SNOW SAFETY**  
-Use winter tires  
-give yourself extra time to arrive at your destination  
-drive for the conditions  
-Park off-street to allow plows to remove snow

*"We can't solve our problems with the same kind of thinking we used when we created them."*  
-Albert Einstein