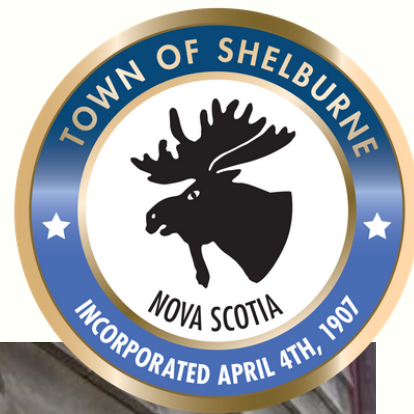


# TOWN OF SHELBURNE



## Message From the Mayor

*By Mayor Karen Mattatall*

Shelburne has just finished another great summer with lots of events including Founder's Days, Art Day, the Whirligig Festival, the Guild Hall Summer Series, the Albacore International Races, and a visit from the cruise ship MV Seabourn Quest. As always, we saw the community come out with standing room only to honor our veterans at the Remembrance Day Ceremony. The Town would like to thank Gary Hemeon for his years of service in this regard. Each year these events continue to grow and we are grateful for the community volunteers who make them possible. Thank you for representing your town so well! With Fall fading and Winter approaching, we look forward to Christmas events and activities.

Shelburne saw the opening of a number of new businesses and the expansion of others in the last months. We hope that you continue to support these businesses through the holiday season.

Hurricane Dorian presented quite a challenge to our small town but we would like to thank the Public Works team, EMO, SVFD, Ladies Auxiliary, and the many residents who came together to provide food, water, generator power, and help with the cleanup. These are all examples of what an amazing and caring community we live in!

Wishing our lobster fishermen a safe and prosperous season!

### IN THIS ISSUE

**TOWN EVENTS  
SCHEDULE  
FALL / WINTER 2019**

**TOWN CEMETERY  
UPDATE**

**FUNDING ANNOUNCEMENTS**

**PUBLIC WORKS REPORT  
POST DORIAN &  
FREQUENTLY ASKED  
QUESTIONS**

**GARBAGE SCHEDULE  
VOLUNTEER  
OPPORTUNITIES**

"We cannot solve our problems with the same thinking we used when we created them." -  
Albert Einstein

# Town Events: What's Happening



Remembrance Day	November 11
Municipal Awareness Week	November 18
Shelburne Celebrates Christmas	November 22-24
Guild Hall Santa Tree	Dec. 13
Christmas Decorating Contest	Dec. 15
New Year's Levee	Jan. 1

## Cemetery Update

The Pine Grove Cemetery has seen some improvements throughout the year including a new gate, created by local blacksmith Jake Roscoe. A new road has been added to allow for the opening of a new portion of the cemetery. Some trees were added to the newest sections to increase the tree canopy and a second columbaria was also installed.

Pricing for plots:

\$180.00 + tax - Town Residents

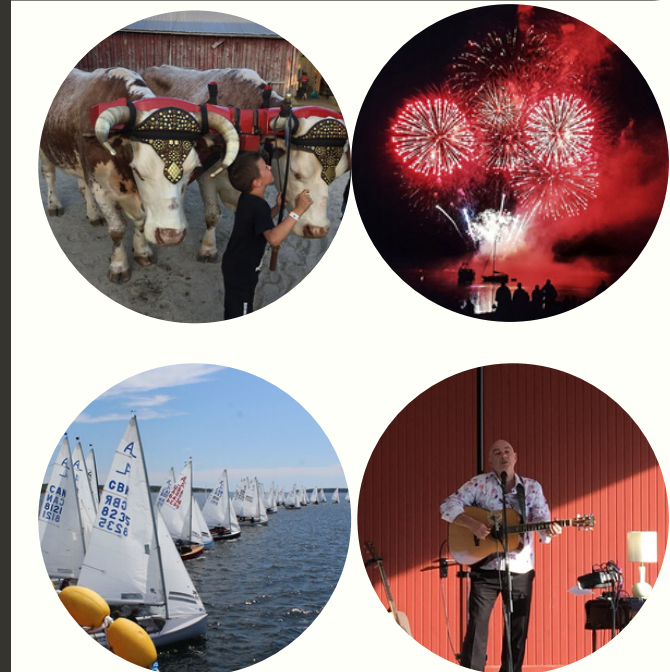
\$360.00 + tax - Non-Residents

Pricing for niches:

\$575.00 incl. tax - Town Residents

\$1,150.00 incl tax - Non-Residents

For information on the Pine Grove Cemetery contact Sarah Mattatall  
[hr@town.shelburne.ns.ca](mailto:hr@town.shelburne.ns.ca)



# Department Highlight: Public Works

Grant, Stephen, Willie, Mike D.,  
Trevor, Peggy, Bart, Danny,  
Mike R.



The Public Works department consists of Grant Balsdon, Operations Manager, the Public Works crew, the Sewer Plant Operator and the Water Plant Operator. Public Works are always a busy crew but the recent hurricane required extra efforts and ongoing repairs to Town infrastructure. Crew were out clearing roads and barricading off dangerous areas immediately following the storm. Power outages to the sewer and water plants also had to be dealt with for public health and safety and generators had to be run by hand by staff. The public works crew will continue to work on repairs to sidewalks and affected areas due to several large trees being uprooted during the storm. Your patience is appreciated during this time. A reminder that winter is coming and plows will need to clear town roads after snowfalls. Please remember not to park vehicles on the road during a storm. If you have to park a vehicle, use the public parking lots as an alternative.

## Frequently Asked Questions:

How do I get a new compost bin?

Contact Town Hall 902-875-2991 ext. 1. Clean out old bin if damaged.

How do I get something fixed?

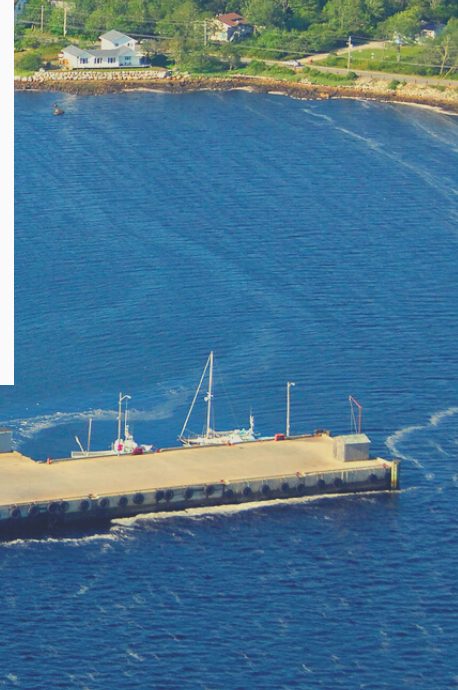
Submit a Work Order via the Town Website (Departments - Public Works) or by phone ext. 1.

Who do I contact for a building permit?

Contact Darren Shupe for an appointment [cao@town.shelburne.ns.ca](mailto:cao@town.shelburne.ns.ca)

# FUNDING ANNOUNCEMENTS

The Town of Shelburne received news that it is receiving funding support in the amount of \$650,000 for the Shelburne Marine Terminal and \$150,000 for upgrades to the Community Centre.



Download the R6RECYCLES APP for your schedule, sorting and more

### 2019 WASTE COLLECTION INFORMATION

Please keep in mind: All items are to be placed curbside by 7:00 a.m. on collection day to ensure collection can take place.

For more information check our website at [www.municipalityofshelburne.ca](http://www.municipalityofshelburne.ca). The Waste Diversion Coordinator can be reached at (902) 875-3544 ext. 240, or by calling the Waste Hotline at 902-875-5336. Check us out on Facebook at Waste Diversion Coordinator.

COMING IN 2019

### What? Where? When? R6RECYCLES

Sign up for weekly collection reminders via email, phone, text or in-app notifications. View, print or download your collection schedule. Never miss a collection day. Watch for more information in the new year.

GREEN WEEK	DAILY SCHEDULE	RED WEEK	DAILY SCHEDULE
MONDAY	Clyde River, Clinton Road, Beaverdam, Quinns Falls, Ingomar, Round Bay, Atlantic, Roseway, Gunning Cove, Carleton Village, Churchover and Birchtown	MONDAY	Jordan Falls, Lake John Road, East Jordan, West Green Harbour, East Green Harbour, Allendale, Osborne, Pleasant Point and Canada Hill
TUESDAY	Ohio, Welshtown, Woodlawn Drive and North Loop Road	TUESDAY	Jordan Falls, Lake John Road, East Jordan, West Green Harbour, East Green Harbour, Allendale, Osborne, Pleasant Point and Canada Hill
WEDNESDAY	Sandy Point, Roseway Park, Jordan Bay, Jordan Ferry, Lake Road and Jordan Branch	WEDNESDAY	Town of Lockport, Brighton and West Head
THURSDAY	Town of Shelburne (South Side of King Street)	THURSDAY	Rockland, Little Harbour, Sable River, West Middle Sable, East Sable, Jones Harbour, MacLeans Lake Road and Little Port L'Hebert
FRIDAY	Town of Shelburne (North Side of King Street)	FRIDAY	

JANUARY							FEBRUARY							MARCH							APRIL							MAY							JUNE												
S	M	T	W	T	F	S	S	M	T	W	T	F	S	S	M	T	W	T	F	S	S	M	T	W	T	F	S	S	M	T	W	T	F	S	S	M	T	W	T	F	S						
		1	2	3	4	5						1	2						1	2	1	2	3	4	5	6																					

## TOWN HALL

## 902-875-2991

OFFICE HOURS

MON-FRI

8:30AM-4:00PM

## VOLUNTEER

THE FOLLOWING GROUPS ARE LOOKING FOR MEMBERS:

- GUILD HALL WORKING GROUP
- CP & V - COMMUNITY PARTICIPATION & VOLUNTEERISM COMMITTEE
- AUDIT COMMITTEE
- EVENTS COMMITTEES

#### CHRISTMAS TREE COLLECTION

On YOUR specific collection day between the dates of January 14 – 24, 2019

#### SPRING METAL COLLECTION

On YOUR specific collection day between the dates of April 16 – 26, 2019.

#### FALL METAL COLLECTION

On YOUR specific collection day between the dates of October 15 – 25, 2019.

**Acceptable Items Include:**  
Scrap metal, white appliances, barbecues, freezers, emptied oil barrels, baseboard heaters, refrigerators, air conditioners, lawn mowers, bicycles, microwaves, and any other type of metal.

TIP:

Why wait for one of the metal collections when you can drop it off anytime throughout the year for free. Did you know that metal items can be taken to the Regional Materials Recovery Facility, located at 4571 Hwy 3, West Green Harbour free-of-charge at any time during the year?

#### THE REGIONAL MATERIALS RECOVERY FACILITY (C&D Site)

4571 Hwy 3, West Green Harbour. Open from Tuesday Saturday from 9:30 a.m. – 4:00 p.m.

Tipping Fee is \$60.00 per tonne for construction & demolition materials

All materials must be separated into the following streams:

- 1) Wood items
- 2) Roofing shingles
- 3) Gypsum board/drywall, plaster
- 4) Vinyl/plastic building materials, carpeting, built up roofing, ceiling tiles, vinyl floor/linoleum, wiring, lighting fixtures and insulation.

Insulation - Please have fibreglass insulation in bags, so it will not blow around the site. Sheets of Styrofoam™ insulation can be taken whole, but must be bagged if in smaller pieces.

Items that are FREE to dispose of include:

- Scrap Metals • Metal Appliances
- Wire Lobster Traps
- Lobster Rope • Leaf and Yard Waste

#### Items NOT accepted during regular waste collection are listed below:

You can return up to four used car/truck tires (at any one time) to any tire retailer in NS. Tires must be off the rim and free of mud and debris.

All construction waste, as well as any solid wooden items, must be taken to the Regional Materials Recovery Facility in West Green Harbour to be recycled.

Propane tanks, rusted paint cans, and other household hazardous waste items are to be taken to the Hazardous Waste Depot at 243 Sandy Point Road, on the 1st and 3rd Monday of each month for proper disposal from 9am - 1pm & 2pm - 4pm. (i.e. adhesives, 1L pesticides, oil, etc.)

Electronics must be taken to the EPRA (Electronic Products Recycling Association) Depot at 108 King Street (across from the Shelburne Mall) to be recycled. No cost to drop off items.