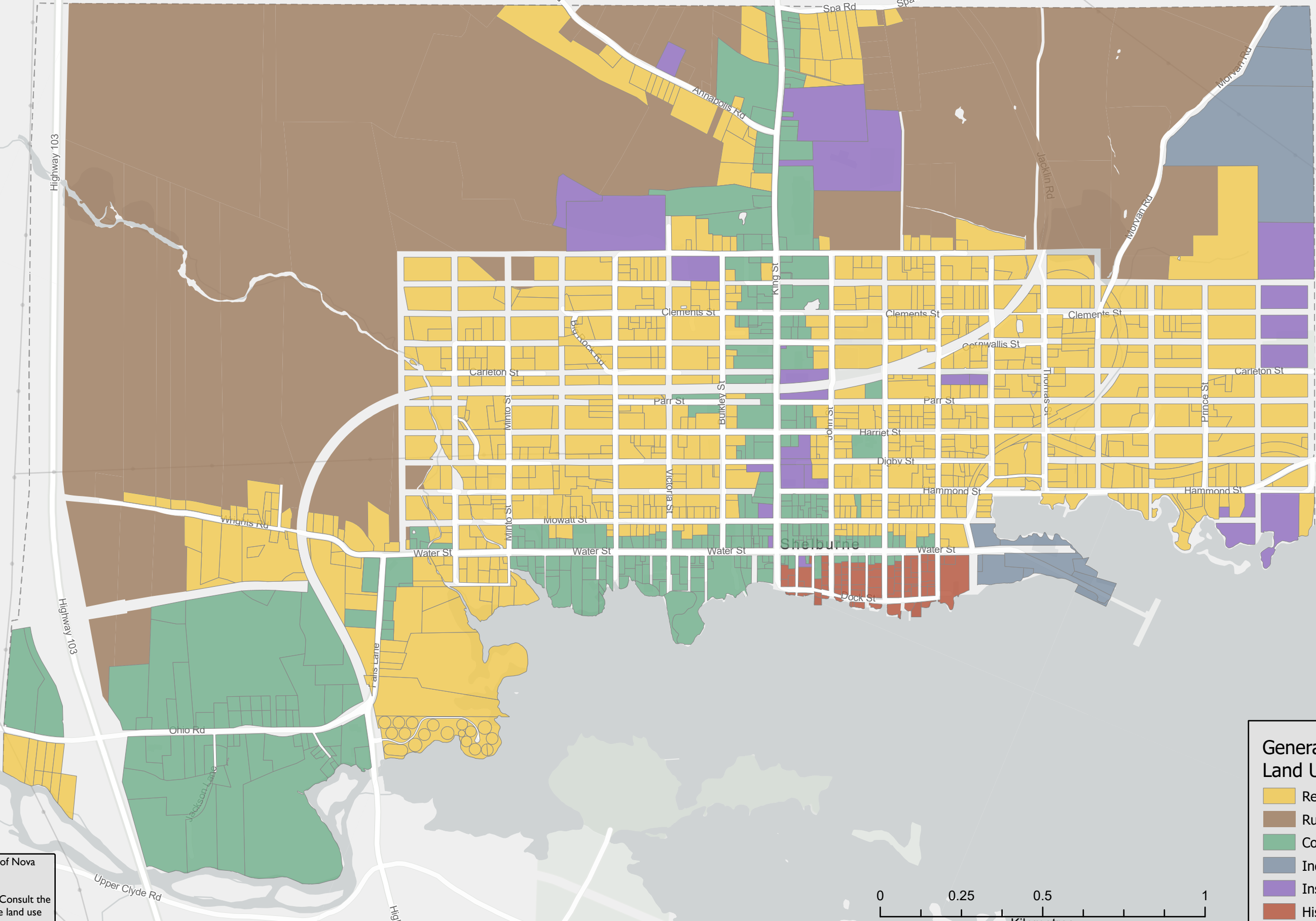


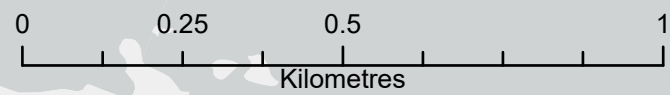
# GENERALIZED FUTURE LAND USE MAP



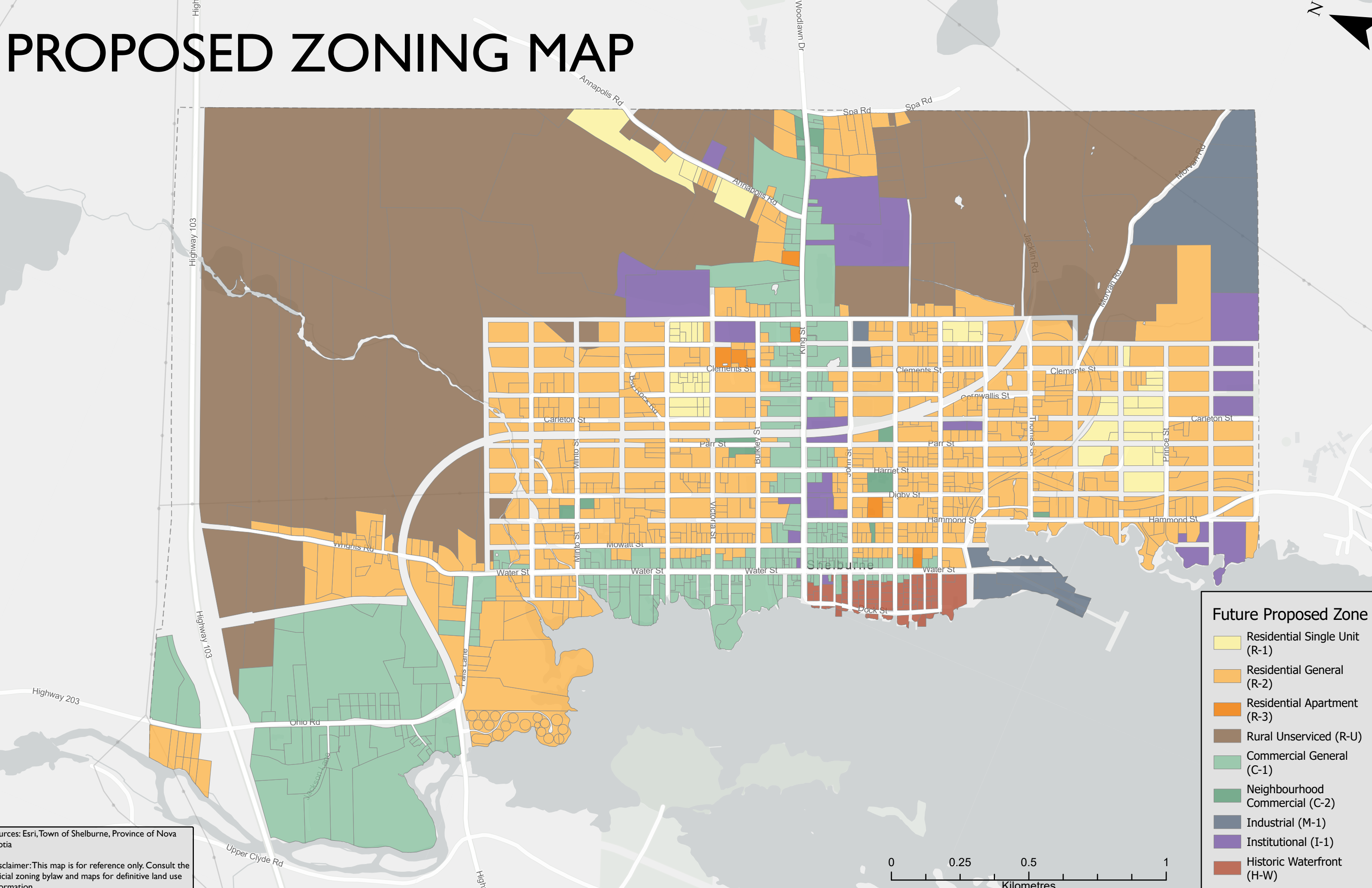
## Generalized Future Land Use Map

- Residential
- Rural Unserved
- Commercial
- Industrial
- Institutional
- Historic Waterfront

Sources: Esri, Town of Shelburne, Province of Nova Scotia  
Disclaimer: This map is for reference only. Consult the official zoning bylaw and maps for definitive land use information

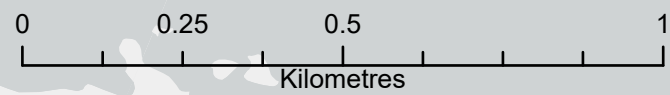


# PROPOSED ZONING MAP



**Future Proposed Zone**

- Residential Single Unit (R-1)
- Residential General (R-2)
- Residential Apartment (R-3)
- Rural Unserviced (R-U)
- Commercial General (C-1)
- Neighbourhood Commercial (C-2)
- Industrial (M-1)
- Institutional (I-1)
- Historic Waterfront (H-W)



Sources: Esri, Town of Shelburne, Province of Nova Scotia  
 Disclaimer: This map is for reference only. Consult the official zoning bylaw and maps for definitive land use information